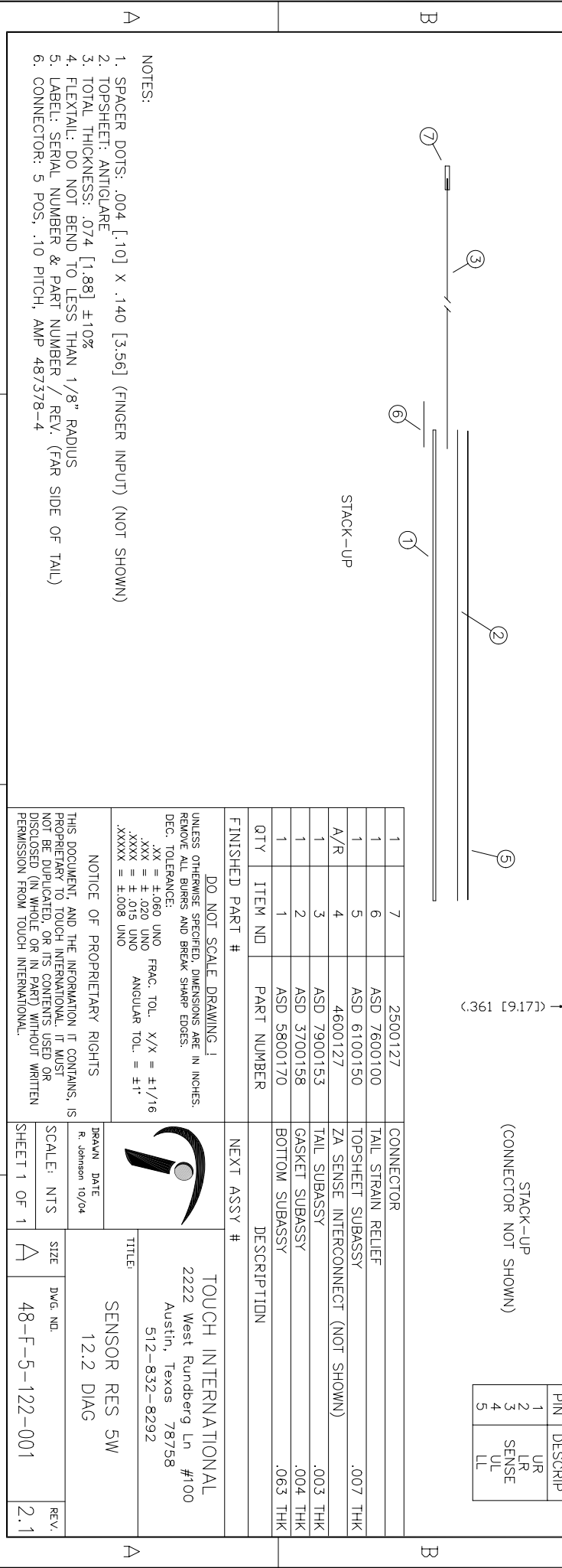


PINOUT	DESCRIP
1	UR
2	LR
3	SENSE
4	UL
5	LL



QTY	ITEM NO	PART NUMBER	DESCRIPTION
1	7	2500127	CONNECTOR
1	6	ASD 7600100	TAIL STRAIN RELIEF
1	5	ASD 6100150	TOPSHEET SUBASSY
A/R	4	4600127	ZA SENSE INTERCONNECT (NOT SHOWN)
1	3	ASD 7900153	TAIL SUBASSY
1	2	ASD 3700158	GASKET SUBASSY
1	1	ASD 5800170	BOTTOM SUBASSY

FINISHED PART #	DO NOT SCALE DRAWING!	UNLESS OTHERWISE SPECIFIED, DIMENSIONS ARE IN INCHES. REMOVE ALL BURRS AND BREAK SHARP EDGES.
	DEC. TOLERANCE:	.XX = ±.060 UNO FRACTIONAL X/X = ±1/16
		.XXX = ±.020 UNO
		.XXXX = ±.015 UNO ANGULAR TOL. = ±1°
		.XXXXX = ±.008 UNO

- NOTES:
1. SPACER DOTS: .004 [1.0] X .140 [3.56] (FINGER INPUT) (NOT SHOWN)
 2. TOPSHEET: ANTIGLARE
 3. TOTAL THICKNESS: .074 [1.88] ±10%
 4. FLEXTAIL: DO NOT BEND TO LESS THAN 1/8" RADIUS
 5. LABEL: SERIAL NUMBER & PART NUMBER / REV. (FAR SIDE OF TAIL)
 6. CONNECTOR: 5 POS, .10 PITCH, AMP 487378-4