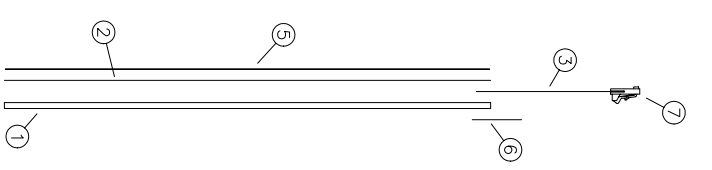
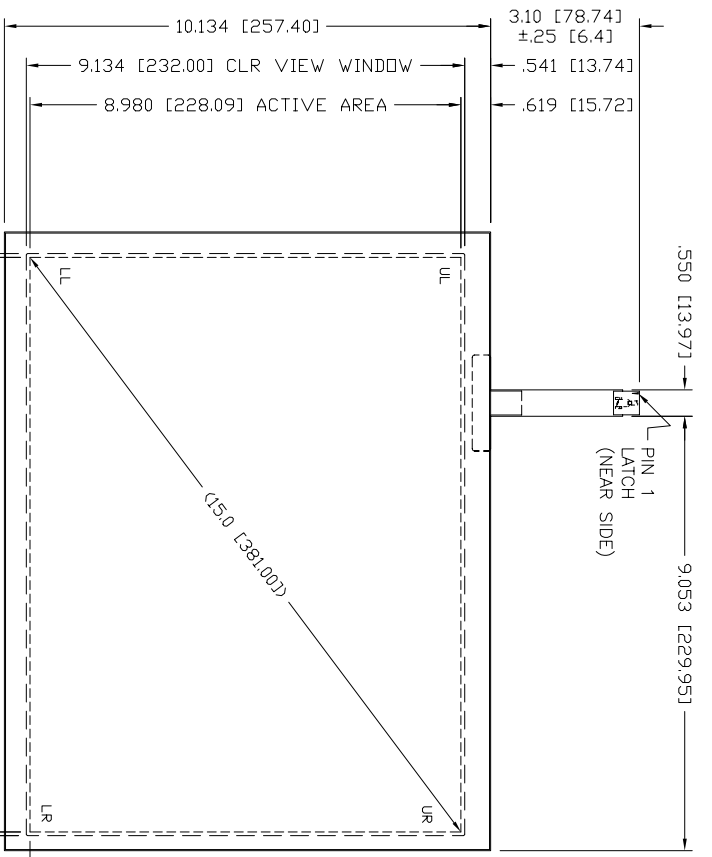


REV	DESCRIPTION	ECD #	DFT	CHK	ENG	DATE
-----	-------------	-------	-----	-----	-----	------




PIN	DESCRIP
1	UL
2	LL
3	SENSE
4	LR
5	UR

QTY	ITEM NO	PART NUMBER	DESCRIPTION
1	7	2500108	CONNECTOR
1	6	ASD 7600100	TAIL STRAIN RELIEF
1	5	ASD 6100179	TOPSHEET SUBASSY
A/R	4	4600127	ZA SENSE INTERCONNECT (NOT SHOWN)
1	3	ASD 7900168	TAIL SUBASSY
1	2	ASD 3700191	GASKET SUBASSY
1	1	ASD 5800192	BOTTOM SUBASSY

STACK-UP
(CONNECTOR NOT SHOWN)

- NOTES:
1. SPACER DOTS: .004 [.10] X .140 [3.56] (PEN/FINGER INPUT) (NOT SHOWN)
 2. TOPSHEET: ANTIGLARE
 3. TOTAL THICKNESS: .136 [3.45] ±10%
 4. FLEXTAIL: DO NOT BEND TO LESS THAN 1/8" RADIUS
 5. LABEL: SERIAL NUMBER & PART NUMBER / REV. (FAR SIDE OF TAIL)
 6. CONNECTOR: 5 POS, .10 PITCH, LATCH, AMP 487526-4

DO NOT SCALE DRAWING!		UNLESS OTHERWISE SPECIFIED, DIMENSIONS ARE IN INCHES. REMOVE ALL BURRS AND BREAK SHARP EDGES.	
DEC. TOLERANCE:		.XX = ±.060 UNO FRACTIONAL X/X = ±1/16	
.XXX = ±.020 UNO		.XXXX = ±.015 UNO	
.XXXXX = ±.008 UNO		ANGULAR TOL. = ±1°	
			
TITLE		TOUCH INTERNATIONAL	
DRAWN DATE		2222 West Rundberg Ln #100	
SCALE: NTS		Austin, Texas 78758	
SIZE		512-832-8292	
DVG. NO.		SENSOR RES SW	
SHEET 1 OF 1		15.0 DIAG	

- NOTES:
1. SPACER DOTS: .004 [.10] X .140 [3.56] (PEN/FINGER INPUT) (NOT SHOWN)
 2. TOPSHEET: ANTIGLARE
 3. TOTAL THICKNESS: .136 [3.45] ±10%
 4. FLEXTAIL: DO NOT BEND TO LESS THAN 1/8" RADIUS
 5. LABEL: SERIAL NUMBER & PART NUMBER / REV. (FAR SIDE OF TAIL)
 6. CONNECTOR: 5 POS, .10 PITCH, LATCH, AMP 487526-4