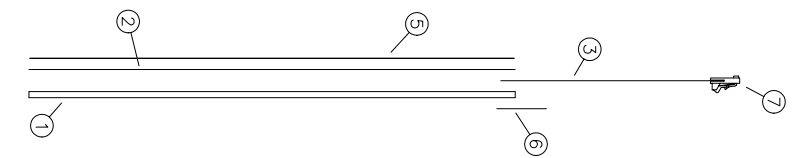
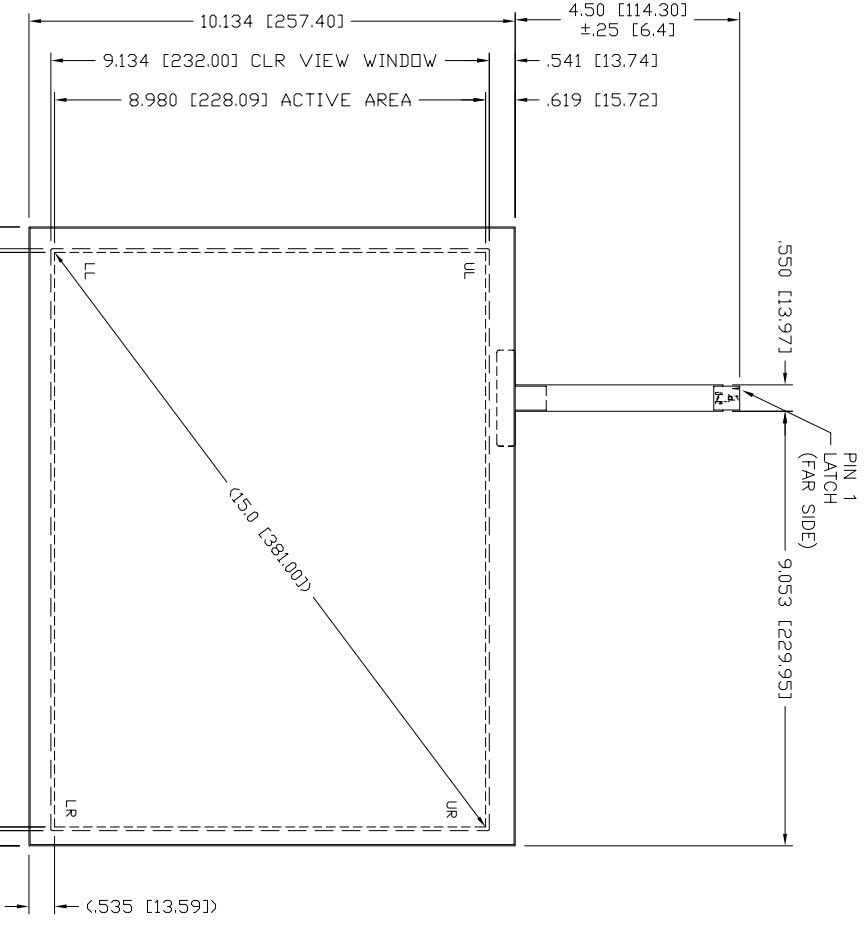


REV	2	DESCRIPTION	1	ECD #	DFT	CHK	ENG	DATE
-----	---	-------------	---	-------	-----	-----	-----	------



PINOUT	DESCRIP
1	UL
2	UR
3	SENSE
4	LR
5	LR

QTY	ITEM NO	PART NUMBER	DESCRIPTION
1	7	2500108	CONNECTOR
1	6	ASD 7600100	TAIL STRAIN RELIEF
1	5	ASD 6100179	TOPSHEET SUBASSY
1	4	4600127	ZA SENSE INTERCONNECT (NOT SHOWN)
1	3	ASD 7900199	TAIL SUBASSY
1	2	ASD 3700191	GASKET SUBASSY
1	1	ASD 5800192	BOTTOM SUBASSY

STACK-UP
(CONNECTOR NOT SHOWN)

DO NOT SCALE DRAWING!
UNLESS OTHERWISE SPECIFIED, DIMENSIONS ARE IN INCHES.
REMOVE ALL BURRS AND BREAK SHARP EDGES.
DEC. TOLERANCE:
.XX = ±.060 UNO FRACTIONAL X/X = ±1/16
.XXX = ±.020 UNO
.XXXX = ±.015 UNO ANGULAR TOL. = ±1°
.XXXXX = ±.008 UNO



TOUCH INTERNATIONAL
2222 West Rundberg Ln #100
Austin, Texas 78758
512-832-8292

NOTICE OF PROPRIETARY RIGHTS
THIS DOCUMENT, AND THE INFORMATION IT CONTAINS, IS PROPRIETARY TO TOUCH INTERNATIONAL. IT MUST NOT BE DUPLICATED, OR ITS CONTENTS USED OR DISCLOSED (IN WHOLE OR IN PART) WITHOUT WRITTEN PERMISSION FROM TOUCH INTERNATIONAL.

DRAWN DATE
R. Johnson 10/04

SCALE: NTS
SIZE: A
DVG. NO: 48-F-5-150-007

REV: 2.0

- NOTES:
1. SPACER DOTS: .004 [1.0] X .140 [3.56] (PEN/FINGER INPUT) (NOT SHOWN)
 2. TOPSHEET: ANTIGLARE
 3. TOTAL THICKNESS: .136 [3.45] ±10%
 4. FLEXTAIL: DO NOT BEND TO LESS THAN 1/8" RADIUS
 5. LABEL: SERIAL NUMBER & PART NUMBER / REV. (FAR SIDE OF TAIL)
 6. CONNECTOR: 5 POS, .10 PITCH, LATCH, AMP 487526-4