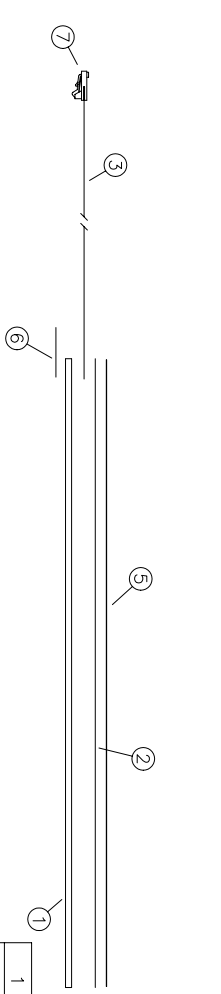
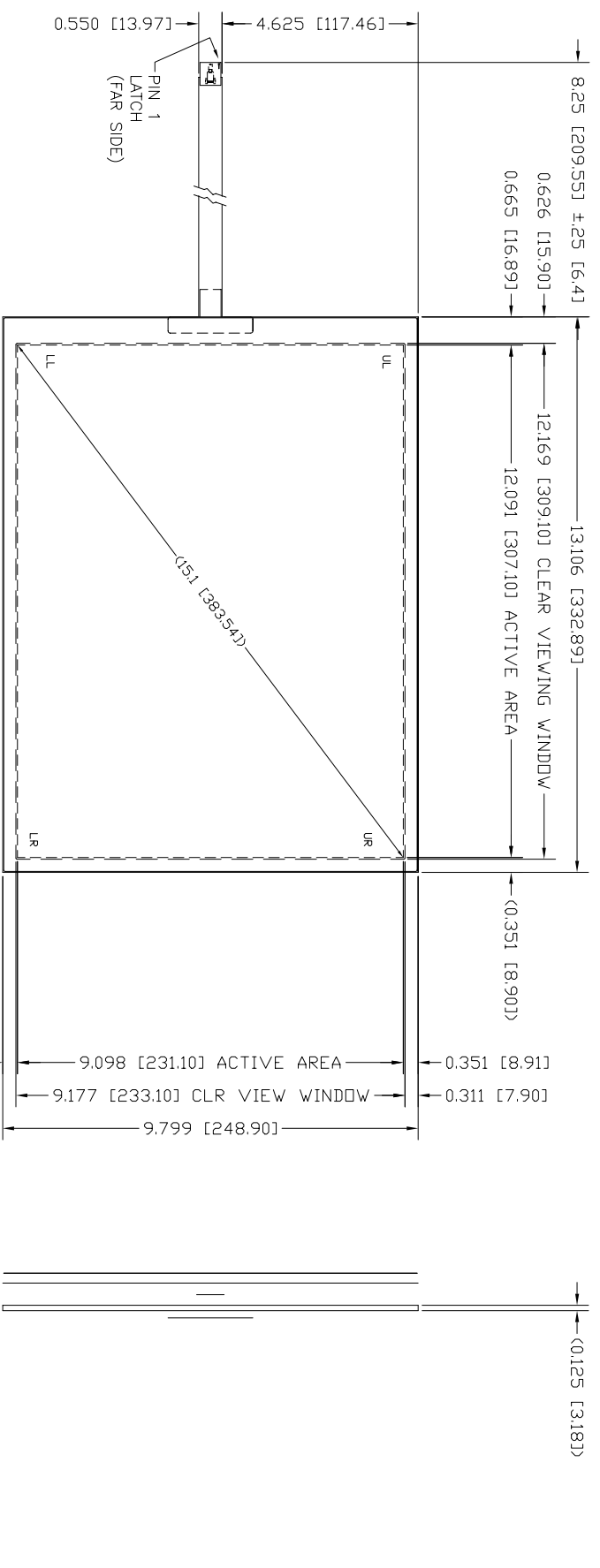


| REV | DESCRIPTION | ECD # | DFT | CHK | ENG | DATE |
|-----|--------------------------|---------|-----|-----|-----|--------|
| 2.1 | CHG'D TAIL. WAS: 14.0 LG | 0504051 | | jh | | 041305 |



| PIN | DESCRIP |
|-----|----------|
| 1 | UR SENSE |
| 2 | LR SENSE |
| 3 | UR SENSE |
| 4 | LR SENSE |
| 5 | LL |

| QTY | ITEM NO | PART NUMBER | DESCRIPTION | FINISHED PART # |
|-----|---------|-------------|-----------------------------------|-----------------|
| 1 | 7 | 2500108 | CONNECTOR | |
| 1 | 6 | ASD 7600100 | TAIL STRAIN RELIEF | |
| 1 | 5 | ASD 6100138 | TOPSHEET SUBASSY | |
| A/R | 4 | 4600127 | ZA SENSE INTERCONNECT (NOT SHOWN) | |
| 1 | 3 | ASD 7900153 | TAIL SUBASSY | .003 THK |
| 1 | 2 | ASD 3700145 | GASKET SUBASSY | .004 THK |
| 1 | 1 | ASD 5800145 | BOTTOM SUBASSY | .125 THK |

DO NOT SCALE DRAWING. UNLESS OTHERWISE SPECIFIED, DIMENSIONS ARE IN INCHES. REMOVE ALL BURRS AND BREAK SHARP EDGES.
 DEC. TOLERANCE: .XX = ±.060 UNO, FRACTIONAL X/Y = ±1/16
 .XXX = ±.020 UNO, ANGULAR TOL. = ±1°
 .XXXX = ±.015 UNO
 .XXXXX = ±.008 UNO



TOUCH INTERNATIONAL
 2222 West Rundberg Ln #100
 Austin, Texas 78758
 512-832-8292

NOTICE OF PROPRIETARY RIGHTS
 THIS DOCUMENT, AND THE INFORMATION IT CONTAINS, IS PROPRIETARY TO TOUCH INTERNATIONAL. IT MUST NOT BE DUPLICATED, OR ITS CONTENTS USED OR DISCLOSED (IN WHOLE OR IN PART) WITHOUT WRITTEN PERMISSION FROM TOUCH INTERNATIONAL.

- NOTES:
1. SPACER DOTS: .004 [.10] X .140 [3.56] (PEN/FINGER INPUT) (NOT SHOWN)
 2. TOPSHEET: ANTIGLARE
 3. TOTAL THICKNESS: .136 [3.45] ±10%
 4. FLEXTAIL: DO NOT BEND TO LESS THAN 1/8" RADIUS
 5. LABEL: SERIAL NUMBER & PART NUMBER / REV. (FAR SIDE OF TAIL)
 6. CONNECTOR: 5 POS, .10 PITCH, LATCH, AMP 487526-4