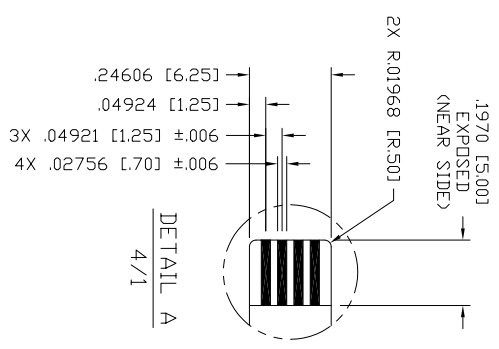
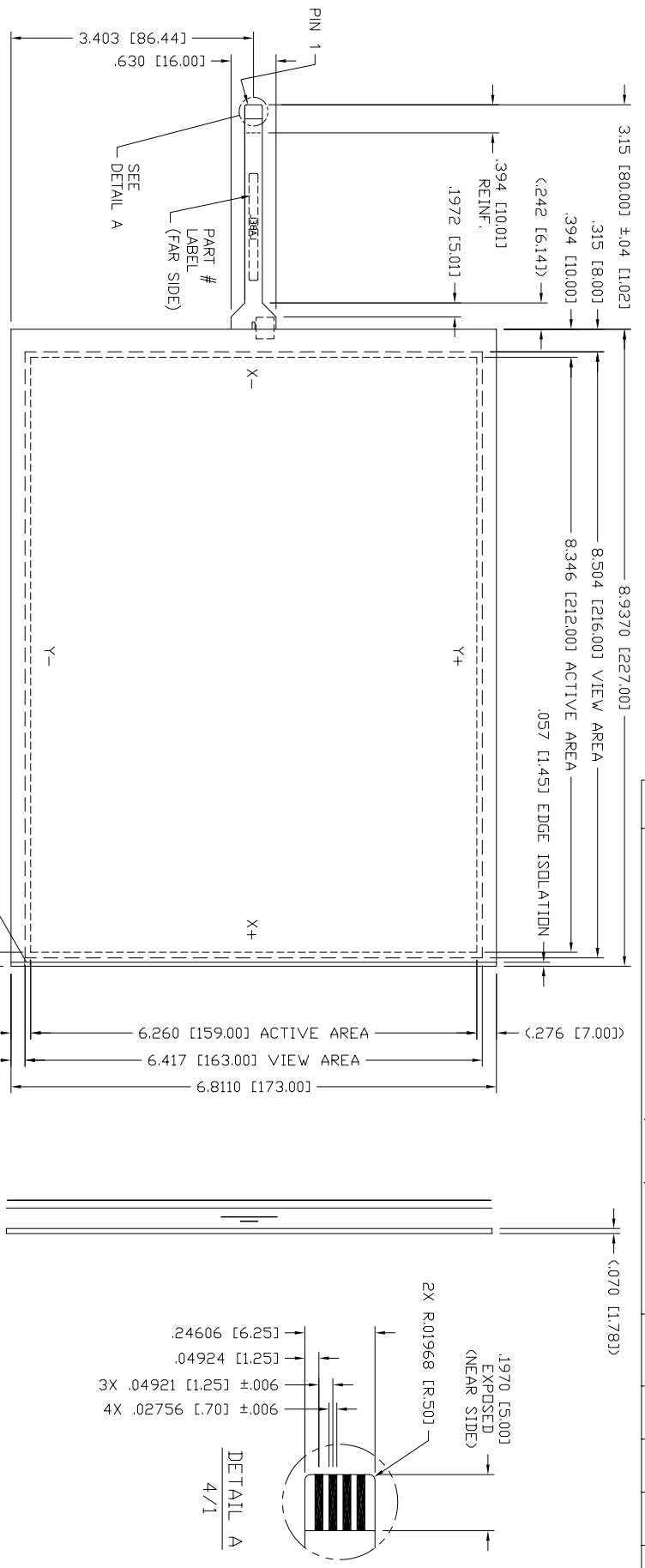


REV	DESCRIPTION	ECD #	DFT	CHK	ENG	DATE
ADDED LABELING SPECIFICATIONS (NOTE 6)			MA			12/7/07



PIN	DESCRIP
4	Y-
3	X+
2	Y+
1	X-

QTY	ITEM NO	PART NUMBER	DESCRIPTION
1	6		EDGE ISOLATION
1	5		STRAIN RELIEF
1	4		TOPSHEET SUBASSY (AG)
1	3		TAIL SUBASSY
1	2		GASKET SUBASSY
1	1		BOTTOMSHEET SUBASSY

FINISHED PART #	DO NOT SCALE DRAWING!
	UNLESS OTHERWISE SPECIFIED, DIMENSIONS ARE IN INCHES. REMOVE ALL BURRS AND BREAK SHARP EDGES.
	DEC. TOLERANCE:
.xxx = ±.060 UNO	FRACTIONAL TOL. X/X = ±1/16
.xxxx = ±.020 UNO	ANGULAR TOL. = ±1°
.xxxxx = ±.008 UNO	
	NOTICE OF PROPRIETARY RIGHTS
	THIS DOCUMENT, AND THE INFORMATION IT CONTAINS, IS PROPRIETARY TO TOUCH INTERNATIONAL. IT MUST NOT BE DUPLICATED, OR ITS CONTENTS USED OR DISCLOSED (IN WHOLE OR IN PART) WITHOUT WRITTEN PERMISSION FROM TOUCH INTERNATIONAL.
	DRAWN DATE: 10/04
	SCALE: NTS
	SHEET 1 OF 1
	TITLE: SENSOR RES. 4W
	2222 West Rundberg Ln #100 Austin, Texas 78758 512-832-8292

- NOTES:
1. TOPSHEET FINISH: ANTI-GLARE
 2. SPACER DOTS: .006 [0.15] X .160 [4.06] SPACING, PEN/FINGER INPUT (NOT SHOWN)
 3. TOTAL THICKNESS: .083 [2.1] ±.008 [0.20]
 4. FLEXTAIL: DO NOT BEND TO LESS THAN 1/8" RADIUS
 5. MATING CONNECTOR: 1.25MM PITCH ZIF
 6. LABEL: SERIAL #, PART #, / REV (FAR SIDE OF TAIL)
LABEL: TI LABEL SPEC # 6600099 TYPE 1, SIZE SMALL (LOCATE APPROX. WHERE SHOWN)

4 3 2 1 ACAD