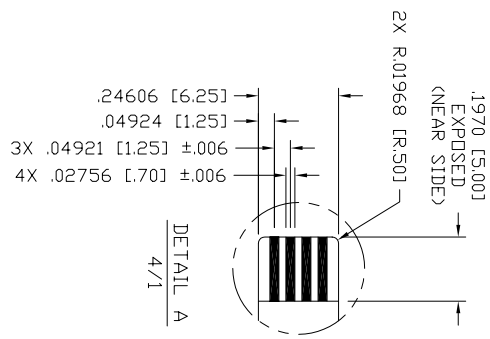
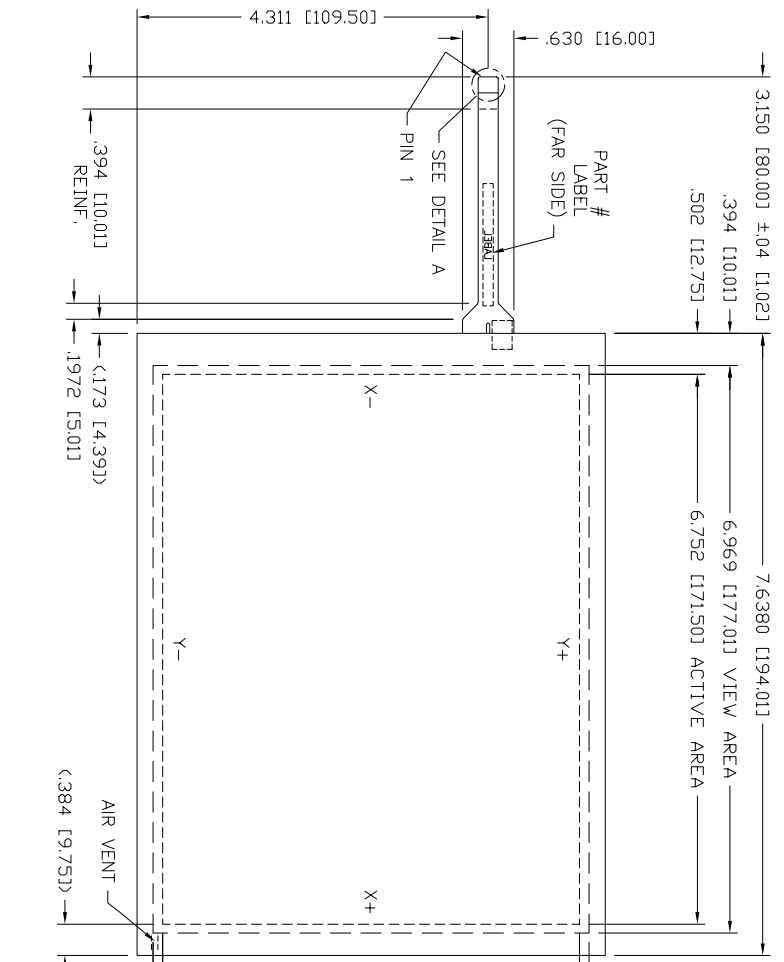


REV	DESCRIPTION	ECD #	DFT	CHK	ENG	DATE
ADDED LABEL SPECIFICATION (NOTE 6)			MA			12/7/07



PINOUT	PIN	DESCRIP
Y-	4	X-
X+	3	Y+
Y+	2	X-
X-	1	X-

QTY	ITEM NO	PART NUMBER	DESCRIPTION
1	5		TAIL STRAIN RELIEF
1	4		TOPSHEET SUBASSY (AG)
1	3		TAIL SUBASSY
1	2		GASKET SUBASSY
1	1		BOTTOMSHEET SUBASSY

FINISHED PART #	DO NOT SCALE DRAWING!	UNLESS OTHERWISE SPECIFIED, DIMENSIONS ARE IN INCHES. REMOVE ALL BURRS AND BREAK SHARP EDGES. DEC. TOLERANCE:	DO NOT SCALE DRAWING!
	XX = ±.060 UNO	FRACTIONAL	X/X = ±1/16
	.XXXX = ±.012 UNO	ANGULAR	TOL. = ±1°
	.XXXXX = ±.008 UNO		

DRAWN DATE: R. Johnson 5/04



TOUCH INTERNATIONAL  
2222 West Rundberg Ln #100  
Austin, Texas 78758  
512-832-8292

SENSOR RES 4W  
8.4 DIAG

- NOTES:
1. TOPSHEET FINISH: ANTI-GLARE
  2. SPACER DOTS: .006 [0.15] X .160 [4.06] SPACING, PEN/FINGER INPUT (NOT SHOWN)
  3. TOTAL THICKNESS: .083 [2.11] ±.006 [0.15]
  4. FLEXTAIL: DO NOT BEND TO LESS THAN 1/8" RADIUS
  5. MATING CONNECTOR: 1.25MM PITCH ZIF
  6. LABEL: SERIAL#, PART# & REV. (FAR SIDE OF TAIL)
- LABEL: TI LABEL SPEC # 6600099 TYPE 1, SIZE SMALL (LOCATE APPROX. WHERE SHOWN)