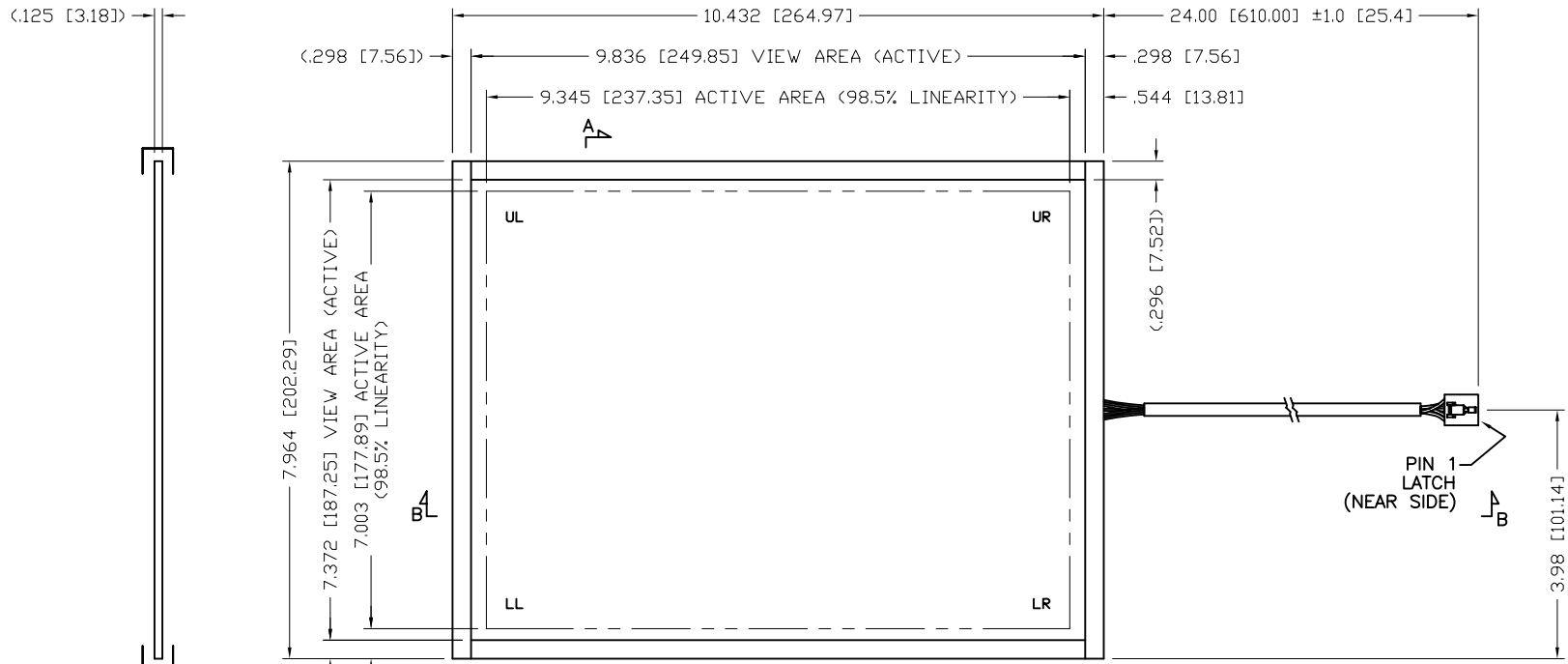
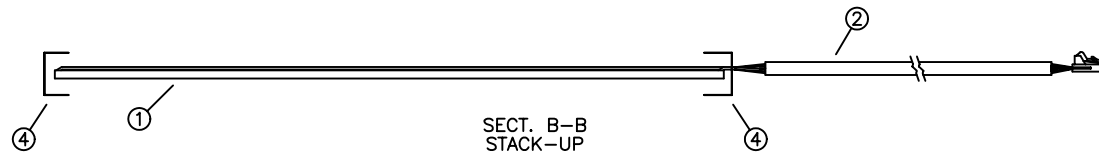


REV	DESCRIPTION	ECD #	DFT	CHK	ENG	DATE
2.3	CHANGED PINOUT	0504053	JH			5/12/05
2.4	ADDED CABLE COLOR TO PINOUT CHART	0703174	S.S.R.			4/17/07



SECT. A-A
STACK-UP
(TAIL & CONNECTOR
NOT SHOWN)




SECT. B-B
STACK-UP

PINOUT	
PIN	DESCRIP
5 (WHITE)	LL
4 (BLACK)	LR
3 (ORANGE)	SENSE/NC
2 (GREEN)	UR
1 (RED)	UL

NOTES:

- TOTAL THICKNESS: $.180 [4.6] \pm 10\%$
- LABEL: SERIAL NUMBER & PART NUMBER / REV
- CONNECTOR: 5 POS, $.10$ PITCH, LATCH, AMP 104257-4
- VLT @83% OR GREATER
- OPERATING TEMP: -20°C TO $+70^{\circ}\text{C}$, 5% TO 90% RH
- STORAGE TEMP: -50°C TO $+85^{\circ}\text{C}$, <35% RH
- ETCH FINISH: AGO

72.0	4	8200100	TAPE, KAPTON, .50
A/R	3	7300100	SOLDER (NOT SHOWN)
1	2	7900102	TAIL SUBASSY
1	1	4000111	BOTTOM SUBASSY .125 THK
QTY	ITEM NO	PART NUMBER	DESCRIPTION

FINISHED PART #		NEXT ASSY #	
<p>DO NOT SCALE DRAWING ! UNLESS OTHERWISE SPECIFIED, DIMENSIONS ARE IN INCHES. REMOVE ALL BURRS AND BREAK SHARP EDGES. DEC. TOLERANCE: .XX = $\pm .060$ UNO FRAC. TOL. X/X = $\pm 1/16$.XXX = $\pm .030$ UNO ANGULAR TOL. = $\pm 1^{\circ}$.XXXX = $\pm .015$ UNO .XXXXX = $\pm .008$ UNO</p>			
<p>NOTICE OF PROPRIETARY RIGHTS THIS DOCUMENT, AND THE INFORMATION IT CONTAINS, IS PROPRIETARY TO TOUCH INTERNATIONAL. IT MUST NOT BE DUPLICATED, OR ITS CONTENTS USED OR DISCLOSED (IN WHOLE OR IN PART) WITHOUT WRITTEN PERMISSION FROM TOUCH INTERNATIONAL.</p>		 <p>TOUCH INTERNATIONAL 2222 West Rundberg Ln #100 Austin, Texas 78758 512-832-8292</p>	
<p>DRAWN DATE R Johnson 3/04</p>		<p>TITLE: SENSOR CAP 5W 12.0 DIAG</p>	
SCALE: NTS	SIZE: A	DWG. NO: 57-120FA-001	REV: 2.4
SHEET 1 OF 1		ACAD	

4

3

2

1

4

3

2

1

ACAD