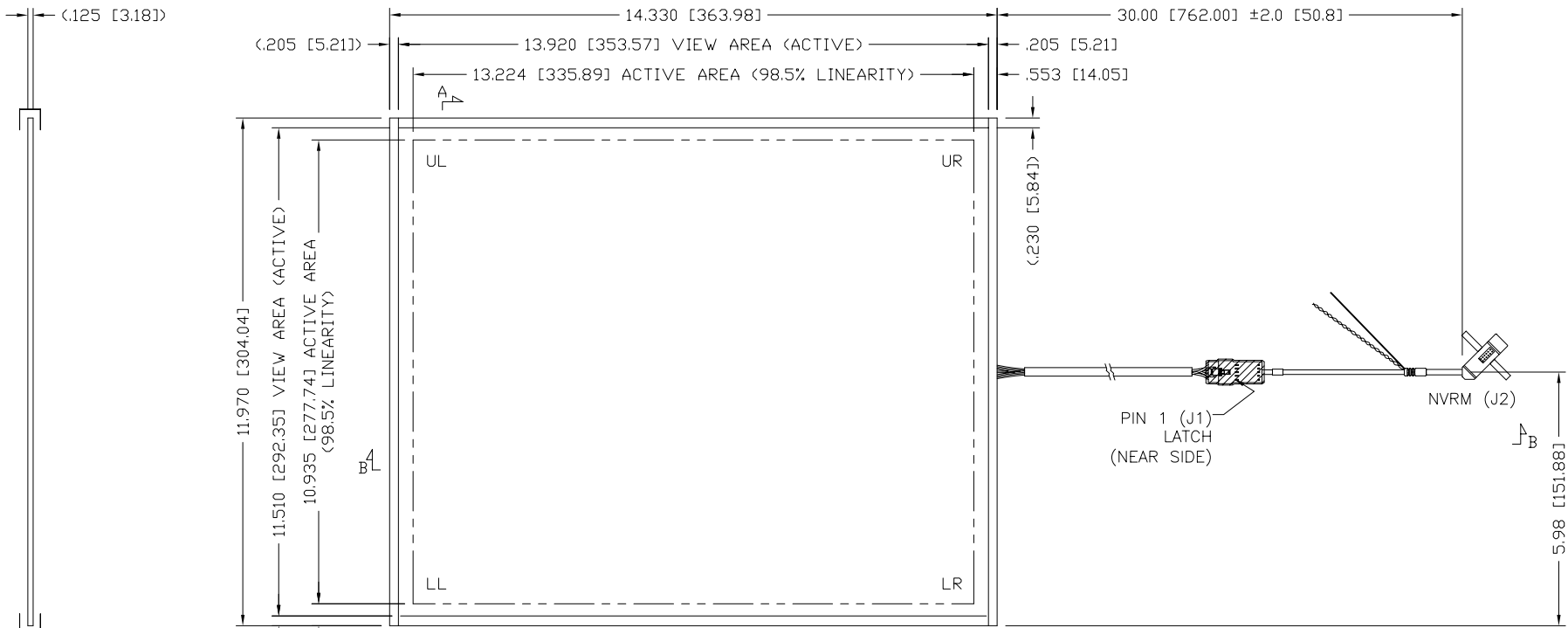
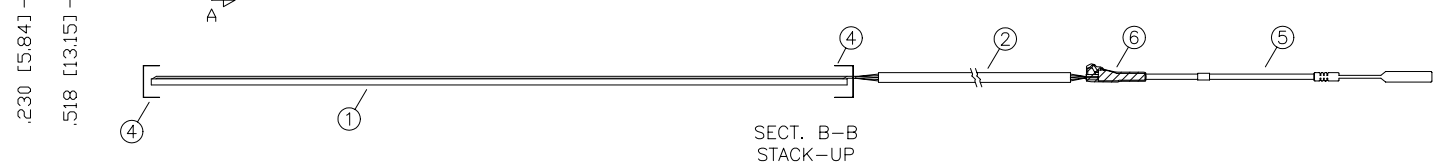


REV	DESCRIPTION	ECD #	DFT	CHK	ENG	DATE
2.2	CHANGED PINOUT	0504053	JH			5/12/05




SECT. A-A
STACK-UP
(CABLE & CONNECTORS
NOT SHOWN)



J1 PINOUT	
PIN	DESCRIP
5	UR
4	UL
3	SENSE/NC
2	LL
1	LR

J2 PINOUT	
PIN	DESCRIP
8	DRIVE 1
8	SHIELD
9	UR
10	LR
11	UL
12	LL

QTY	ITEM NO	PART NUMBER	DESCRIPTION
1.4	6	1600138	HEATSHRINK, .75
1	5	7900101	NOVRAM, 7"
100.0	4	8200100	TAPE, KAPTON, .50
A/R	3	7300100	SOLDER (NOT SHOWN)
1	2	7900102	TAIL SUBASSY
1	1	4000192	BOTTOM SUBASSY .125 THK

FINISHED PART #		NEXT ASSY #	
DO NOT SCALE DRAWING !			
UNLESS OTHERWISE SPECIFIED, DIMENSIONS ARE IN INCHES. REMOVE ALL BURRS AND BREAK SHARP EDGES.			
DEC. TOLERANCE:			
.XX = ±.060 UNO		FRAC. TOL. x/x = ±1/16	
.XXX = ±.030 UNO		ANGULAR TOL. = ±1°	
.XXXX = ±.015 UNO			
.XXXXX = ±.008 UNO			
NOTICE OF PROPRIETARY RIGHTS			
THIS DOCUMENT, AND THE INFORMATION IT CONTAINS, IS PROPRIETARY TO TOUCH INTERNATIONAL. IT MUST NOT BE DUPLICATED, OR ITS CONTENTS USED OR DISCLOSED (IN WHOLE OR IN PART) WITHOUT WRITTEN PERMISSION FROM TOUCH INTERNATIONAL.		TOUCH INTERNATIONAL 2222 West Rundberg Ln #100 Austin, Texas 78758 512-832-8292	
DRAWN DATE JH 6/04		TITLE: SENSOR CAP 5W 17.0 DIAG W/ NVRM	
SCALE: NTS	SIZE: A	DWG. NO.: 57-170FA-011-1	REV.: 2.2
SHEET 1 OF 1		ACAD	

- NOTES:
- TOTAL THICKNESS: .180 [4.6] ±10%
 - LABEL: SERIAL NUMBER & PART NUMBER / REV.
 - CONNECTOR(J1): 5 POS, .10 PITCH, LATCH, AMP 104257-4
 - VLT @83% OR GREATER
 - OPERATING TEMP: -20°C TO +70°C, 5% TO 90% RH
 - STORAGE TEMP: -50°C TO +85°C, <35% RH
 - ETCH FINISH: AGO