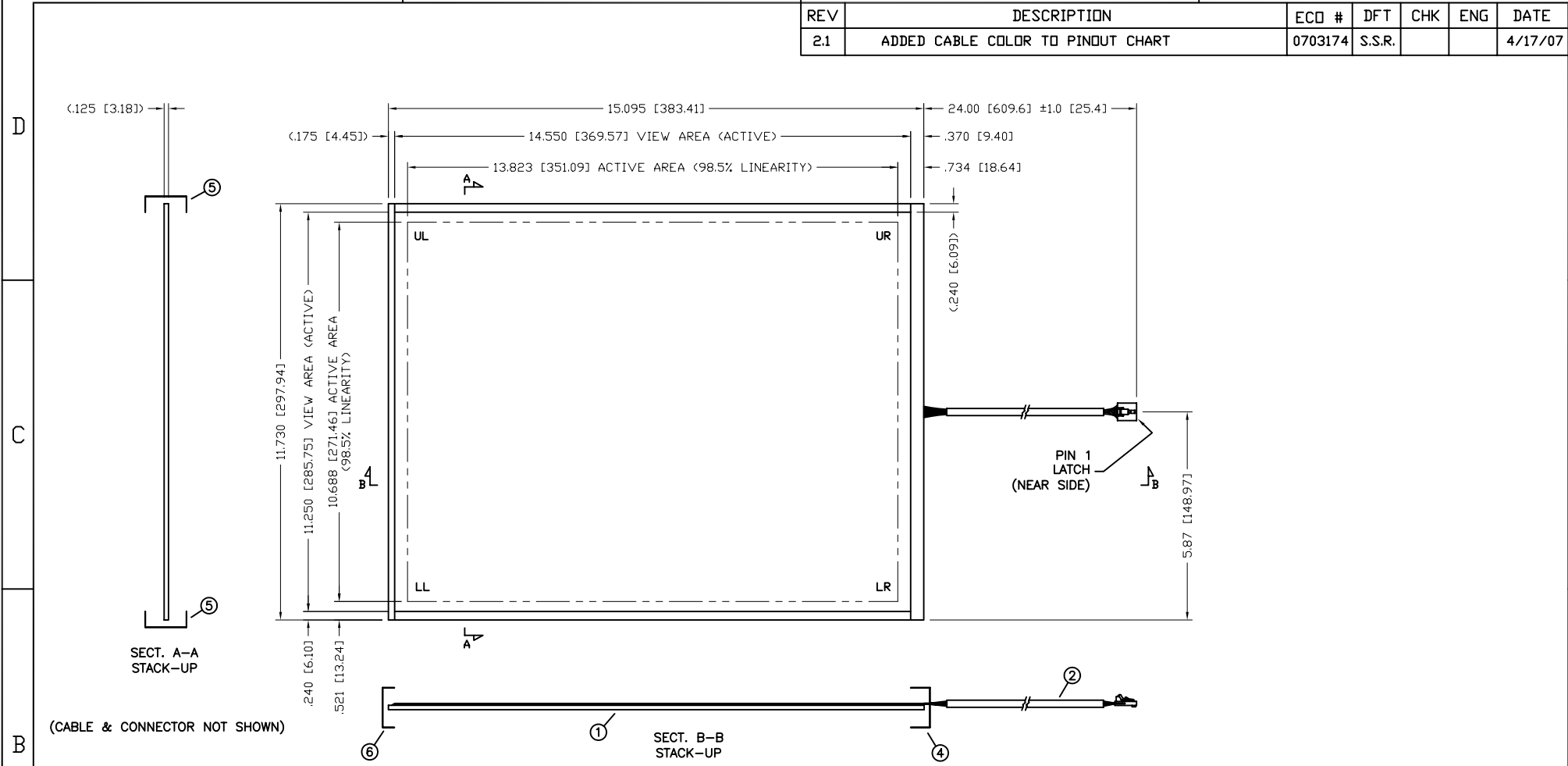


REV	DESCRIPTION	ECD #	DFT	CHK	ENG	DATE
2.1	ADDED CABLE COLOR TO PINOUT CHART	0703174	S.S.R.			4/17/07



SECT. A-A
STACK-UP

(CABLE & CONNECTOR NOT SHOWN)

SECT. B-B
STACK-UP

PINOUT	
PIN	DESCRIP
5 (WHITE)	LL
4 (BLACK)	LR
3 (ORANGE)	SENSE/NC
2 (GREEN)	UR
1 (RED)	UL

- NOTES:
- TOTAL THICKNESS: .180 [4.6] ±10%
 - LABEL: SERIAL NUMBER & PART NUMBER / REV. (FAR SIDE OF TAIL)
 - CONNECTOR: 5 POS, .10 PITCH, LATCH, AMP 487526-4
 - VLT @83% OR GREATER
 - OPERATING TEMP: -20°C TO +70°C, 5% TO 90% RH
 - STORAGE TEMP: -50°C TO +85°C, <35% RH
 - ETCH FINISH: AGO

23.5	6	8200110	TAPE, KAPTON, .25
60.0	5	8200100	TAPE, KAPTON, .50
12.0	4	8200106	TAPE, KAPTON, .75
1	3	7300100	SOLDER (NOT SHOWN)
1	2	7900102	TAIL SUBASSY
1	1	4000120	BOTTOM SUBASSY .125 THK
QTY	ITEM NO	PART NUMBER	DESCRIPTION

FINISHED PART #		NEXT ASSY #	
DO NOT SCALE DRAWING !			
UNLESS OTHERWISE SPECIFIED, DIMENSIONS ARE IN INCHES. REMOVE ALL BURRS AND BREAK SHARP EDGES.			
DEC. TOLERANCE:			
.XX = ±.060 UNO		FRAC. TOL X/X = ±1/16	
.XXX = ±.030 UNO		ANGULAR TOL. = ±1°	
.XXXX = ±.015 UNO		.XXXXX = ±.008 UNO	
NOTICE OF PROPRIETARY RIGHTS		DRAWN DATE	
THIS DOCUMENT, AND THE INFORMATION IT CONTAINS, IS PROPRIETARY TO TOUCH INTERNATIONAL. IT MUST NOT BE DUPLICATED, OR ITS CONTENTS USED OR DISCLOSED (IN WHOLE OR IN PART) WITHOUT WRITTEN PERMISSION FROM TOUCH INTERNATIONAL.		JH 6/05	
SCALE: NTS		TITLE:	
SHEET 1 OF 1		TOUCH INTERNATIONAL 2222 West Rundberg Ln #100 Austin, Texas 78758 512-832-8292	
SIZE	DWG. NO.	REV.	
A	57-181FA-011	2.1	