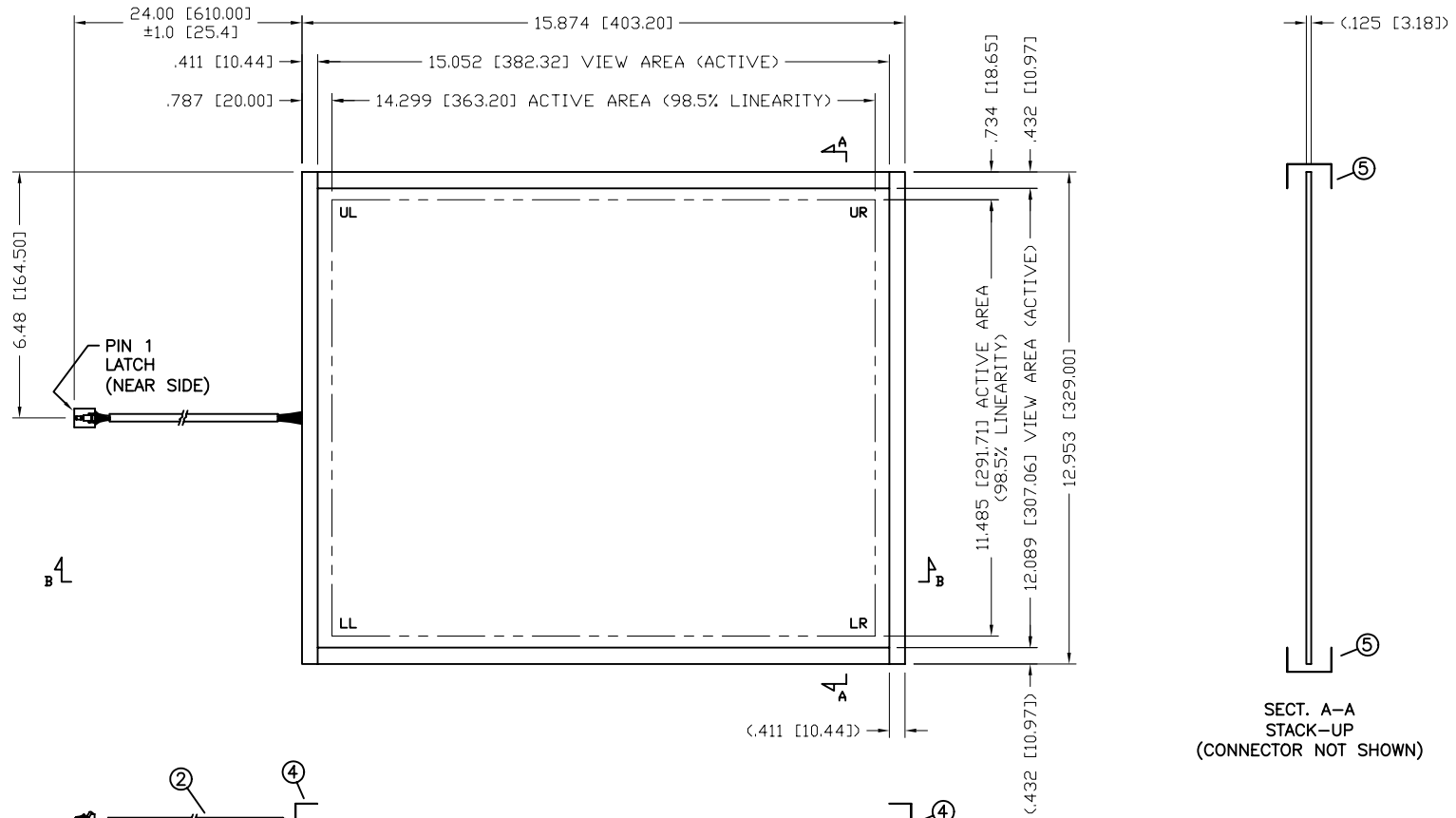


REV	DESCRIPTION	ECD #	DFT	CHK	ENG	DATE
2.1	ADDED CABLE COLOR TO PINDOUT CHART	0703174	S.S.R.			4/17/07




SECT. A-A
STACK-UP
(CONNECTOR NOT SHOWN)

SECT. B-B
STACK-UP

PINDOUT	
PIN	DESCRIP
1 (RED)	UL
2 (GREEN)	UR
3 (ORANGE)	SENSE/NC
4 (BLACK)	LR
5 (WHITE)	LL

- NOTES:
- TOTAL THICKNESS: .180 [4.6] ±10%
 - LABEL: SERIAL NUMBER & PART NUMBER / REV.
 - CONNECTOR: 5 POS, .10 PITCH, LATCH, AMP 104257-4
 - VLT @83% OR GREATER
 - OPERATING TEMP: -20°C TO +70°C, 5% TO 90% RH
 - STORAGE TEMP: -50°C TO +85°C, <35% RH
 - ETCH FINISH: AGO

32.0	5	8200104	TAPE, KAPTON 1.0
26.0	4	8200106	TAPE, KAPTON .75
1	3	7300100	SOLDER (NOT SHOWN)
1	2	7900102	TAIL SUBASSY
1	1	4000175	BOTTOM SUBASSY .125 THK
QTY	ITEM NO	PART NUMBER	DESCRIPTION

FINISHED PART #		NEXT ASSY #	
DO NOT SCALE DRAWING !			
UNLESS OTHERWISE SPECIFIED, DIMENSIONS ARE IN INCHES. REMOVE ALL BURRS AND BREAK SHARP EDGES.			
DEC. TOLERANCE:			
.XX = ±.060 UNO		FRAC. TOL. X/X = ±1/16	
.XXX = ±.030 UNO		ANGULAR TOL. = ±1°	
.XXXX = ±.015 UNO			
.XXXXX = ±.008 UNO			
NOTICE OF PROPRIETARY RIGHTS		 <p>TOUCH INTERNATIONAL 2222 West Rundberg Ln #100 Austin, Texas 78758 512-832-8292</p>	
THIS DOCUMENT, AND THE INFORMATION IT CONTAINS, IS PROPRIETARY TO TOUCH INTERNATIONAL. IT MUST NOT BE DUPLICATED, OR ITS CONTENTS USED OR DISCLOSED (IN WHOLE OR IN PART) WITHOUT WRITTEN PERMISSION FROM TOUCH INTERNATIONAL.			
DRAWN DATE JH 06/05		TITLE: SENSOR CAP 5W 19.0 DIAG	
SCALE: NTS	SIZE: A	DWG. NO.: 57-190FA-001	REV.: 2.1
SHEET 1 OF 1		ACAD	