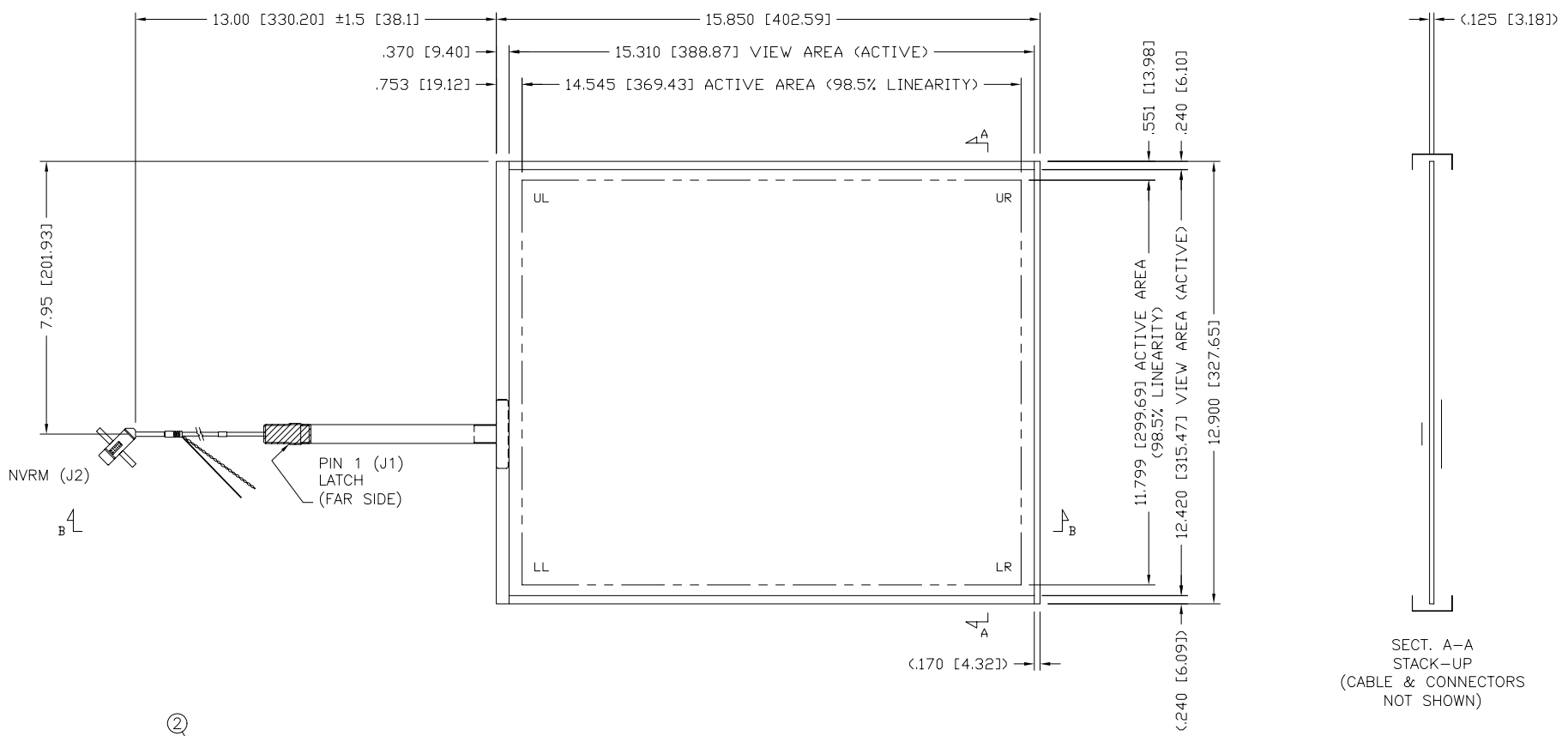
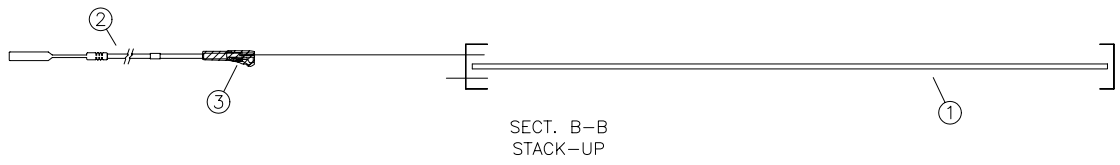


REV	DESCRIPTION	ECD #	DFT	CHK	ENG	DATE
-----	-------------	-------	-----	-----	-----	------



SECT. A-A
STACK-UP
(CABLE & CONNECTORS
NOT SHOWN)



J2 PINOUT	
PIN	DESCRIP
8	DRIVE 1
8	SHIELD
9	UR
10	LR
11	UL
12	LL

J1 PINOUT	
PIN	DESCRIP
5	UR
4	UL
3	SENSE/NC
2	LL
1	LR

1.4	3	1600138	HEATSHRINK, .75
1	2	7900101	NOVRAM 7"
1	1	57-190FA-042	SENSOR CAP 5W 19.0 DIAG
QTY	ITEM NO	PART NUMBER	DESCRIPTION

FINISHED PART #	NEXT ASSY #
-----------------	-------------

DO NOT SCALE DRAWING !
UNLESS OTHERWISE SPECIFIED, DIMENSIONS ARE IN INCHES.
REMOVE ALL BURRS AND BREAK SHARP EDGES.
DEC. TOLERANCE:
.XX = ±.060 UNO FRAC. TOL. X/X = ±1/16
.XXX = ±.030 UNO
.XXXX = ±.015 UNO ANGULAR TOL. = ±1°
.XXXXX = ±.008 UNO



TOUCH INTERNATIONAL
2222 West Rundberg Ln #100
Austin, Texas 78758
512-832-8292

NOTICE OF PROPRIETARY RIGHTS
THIS DOCUMENT, AND THE INFORMATION IT CONTAINS, IS PROPRIETARY TO TOUCH INTERNATIONAL. IT MUST NOT BE DUPLICATED, OR ITS CONTENTS USED OR DISCLOSED (IN WHOLE OR IN PART) WITHOUT WRITTEN PERMISSION FROM TOUCH INTERNATIONAL.

DRAWN DATE R. Johnson 3/06		TITLE: SENSOR CAP 5W 19.0 DIAG W/ NVRM	
SCALE: NTS	SIZE A	DWG. NO. 57-190FA-042-1	REV. 2.0
SHEET 1 OF 1			

- NOTES:
- TOTAL THICKNESS: .128 [3.25] ±10%
 - FLEXTAIL: DO NOT BEND TO LESS THAN 1/8" RADIUS
 - LABEL: SERIAL NUMBER & PART NUMBER / REV. (FAR SIDE OF TAIL)
 - CONNECTOR(J1): 5 POS, .10 PITCH, LATCH, AMP 487526-4
 - VLT @83% OR GREATER
 - OPERATING TEMP: -20°C TO +70°C, 5% TO 90% RH
 - STORAGE TEMP: -50°C TO +85°C, <35% RH