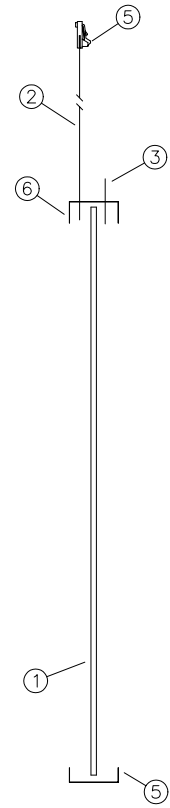



REV	DESCRIPTION	ECD #	DFT	CHK	ENG	DATE
2.2	CHANGED TAIL. WAS: 7900167	0506058			JH	6/6/05



PINOUT	
PIN	DESCRIP
1	UL
2	UR
3	SENSE/NC
4	LR
5	LL

QTY	ITEM NO	PART NUMBER	DESCRIPTION
1	7	2500108	CONNECTOR
17.0	6	8200106	TAPE, KAPTON, .75
34.0	5	8200110	TAPE, KAPTON, .25
52.4	4	8200100	TAPE, KAPTON, .50
1	3	7600102	STRAIN RELIEF
1	2	7900224	TAIL SUBASSY
1	1	4000199	BOTTOM SUBASSY .125 THK

FINISHED PART #		NEXT ASSY #	
DO NOT SCALE DRAWING !			
UNLESS OTHERWISE SPECIFIED, DIMENSIONS ARE IN INCHES. REMOVE ALL BURRS AND BREAK SHARP EDGES.			
DEC. TOLERANCE:			
.XX = ±.060 UNO		FRAC. TOL. x/x = ±1/16	
.XXX = ±.030 UNO		ANGULAR TOL. = ±1°	
.XXXX = ±.015 UNO			
.XXXXX = ±.008 UNO			
NOTICE OF PROPRIETARY RIGHTS			
THIS DOCUMENT, AND THE INFORMATION IT CONTAINS, IS PROPRIETARY TO TOUCH INTERNATIONAL. IT MUST NOT BE DUPLICATED, OR ITS CONTENTS USED OR DISCLOSED (IN WHOLE OR IN PART) WITHOUT WRITTEN PERMISSION FROM TOUCH INTERNATIONAL.			
		TOUCH INTERNATIONAL 2222 West Rundberg Ln #100 Austin, Texas 78758 512-832-8292	
		TITLE: SENSOR CAP 5W 20.0 DIAG	
DRAWN DATE R. Johnson 05/04		SCALE: NTS	SIZE: A
SHEET 1 OF 1		DWG. NO. 57-200FA-002	REV. 2.2

- NOTES:
- TOTAL THICKNESS: .128 [3.25] ±10%
 - FLEXTAIL: DO NOT BEND TO LESS THAN 1/8" RADIUS
 - LABEL: SERIAL NUMBER & PART NUMBER / REV. (FAR SIDE OF TAIL)
 - CONNECTOR: 5 POS, .10 PITCH, LATCH, AMP 487526-4
 - VLT @80% OR GREATER
 - OPERATING TEMP: -20°C TO +70°C, 5% TO 90% RH
 - STORAGE TEMP: -50°C TO +85°C, <35% RH
 - ETCH FINISH: AGO