

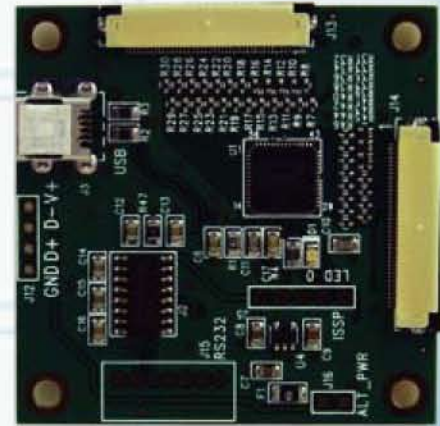
54-B-PMC-07 Extreme Touch

Projected Capacitive 1 PSoC Controller

Touch International's 54-B-PMC-07 projected capacitive controller is one of several options the Extreme Touch product line has to offer. Designed to interface with computer systems through a wide variety of standard interfaces, the controller is compatible with USB, I2C and Serial communications. Combined with Touch International's proprietary firmware, the controller can easily be tuned to your custom design, as well as a range of different applications. Now featuring multi-touch and gesture (two finger touch) capabilities, the 54-B-PMC-07 controller can help take your product application to the next level.

Features

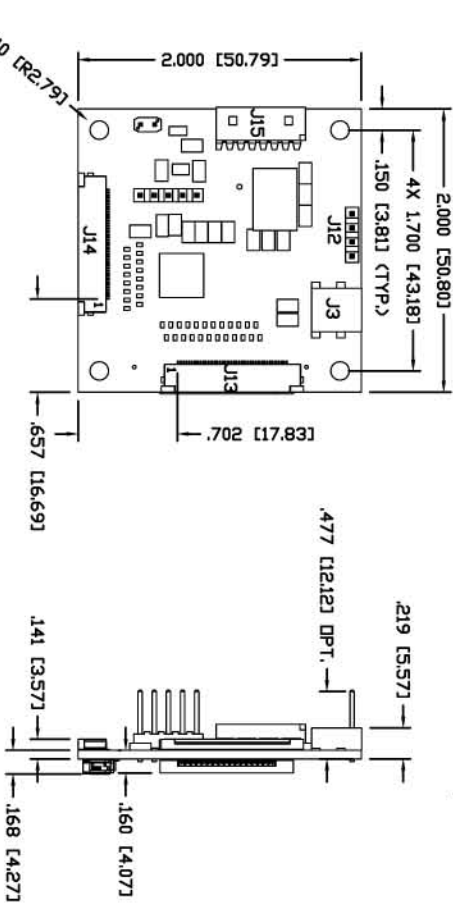
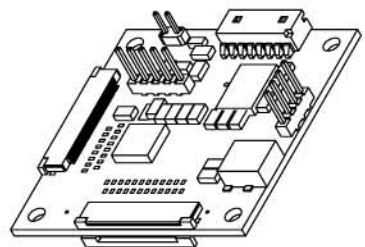
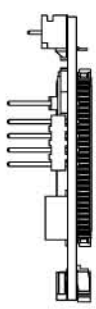
Motion Detection Method	Capacitive sensing using a Sigma-Delta modulator.
X/Y Position Reporting	Absolute Position
Touch Force	No contact pressure required.
Calibration	No need for calibration.
Chip Set Solution	Available
Touch	Single Touch and Gesture (Two Finger Touch)
Interface	HID Compliant.
RoHS	Compliant.
REACH	Compliant
Warranty	1 Year



Specifications

Controller Size	2.0" x 2.0" (50.80mm x 50.80mm)
Power Requirements	5 ~ 9V DC unregulated power, typical 60mA
Operating Temperature	-40 to 85°C
Storage Temperature	-40 to 85°C
Relative Humidity	35°C at 95% RH Non-Condensing
Interface	USB: 2.0, 1.1 compliant (Standard) Optional: USB-UART RS-232 Serial Communication Protocol: No Parity, 8 Data Bits, 1 Stop Bit, 15200 Baud, No Flow Control I2C Communication
Communication Cables	A Plug/5-Pin Mini-B Plug (USB & USB-UART): TI# 1300264
Resolution	2048 x 2048
Report Rate	Approx. 25 - 50 points/sec
Mean Time between Failures	> 5,600,000 hrs.
Maximum Screen Size Supported	8.4"
Supported Operating Systems	Windows 2000, XP, Vista & 7, Linux Ubuntu, Mac OSX 10.X (Lepoard)

REV	DESCRIPTION	ECD #	DFT	CHK	ENG	DATE
-----	-------------	-------	-----	-----	-----	------



- J1 PINOUT**
(DPT. 1 MM)
- J1 - PIN01 - COL.1
 - J1 - PIN02 - COL.2
 - J1 - PIN03 - COL.3
 - J1 - PIN04 - COL.4
 - J1 - PIN05 - COL.5
 - J1 - PIN06 - COL.6
 - J1 - PIN07 - COL.7
 - J1 - PIN08 - COL.8
 - J1 - PIN09 - COL.9
 - J1 - PIN10 - COL.10
 - J1 - PIN11 - COL.11
 - J1 - PIN12 - COL.12
 - J1 - PIN13 - COL.13
 - J1 - PIN14 - COL.14
 - J1 - PIN15 - COL.15
 - J1 - PIN16 - COL.16
 - J1 - PIN17 - COL.17
 - J1 - PIN18 - COL.18
 - J1 - PIN19 - COL.19
 - J1 - PIN20 - COL.20
 - J1 - PIN21 - COL.21
 - J1 - PIN22 - COL.22
 - J1 - PIN23 - COL.23
 - J1 - PIN24 - COL.24
 - J1 - PIN25 - N/C
 - J1 - PIN26 - N/C

- J9 PINOUT**
(DPT. 1 MM)
- J9 - PIN01 - RDV.1
 - J9 - PIN02 - RDV.2
 - J9 - PIN03 - RDV.3
 - J9 - PIN04 - RDV.4
 - J9 - PIN05 - RDV.5
 - J9 - PIN06 - RDV.6
 - J9 - PIN07 - RDV.7
 - J9 - PIN08 - RDV.8
 - J9 - PIN09 - RDV.9
 - J9 - PIN10 - RDV.0
 - J9 - PIN11 - RDV.11
 - J9 - PIN12 - RDV.12
 - J9 - PIN13 - RDV.13
 - J9 - PIN14 - RDV.14
 - J9 - PIN15 - RDV.15
 - J9 - PIN16 - RDV.16

- J15 PINOUT**
(RSS232)
- J15 - PIN01 - N/C
 - J15 - PIN02 - TX232
 - J15 - PIN03 - RX232
 - J15 - PIN04 - N/C
 - J15 - PIN05 - GRD
 - J15 - PIN06 - N/C
 - J15 - PIN07 - GRD

- J12 PINOUT**
(USB)
- J12 - PIN04 - VBUS
 - J12 - PIN03 - D-
 - J12 - PIN02 - D+
 - J12 - PIN01 - GRD

- J3 PINOUT**
(USB)
- J3 - PIN01 - VBUS
 - J3 - PIN02 - D-
 - J3 - PIN03 - D+
 - J3 - PIN04 - GRD
 - J3 - PIN05 - N/C

QTY	ITEM NO	PART NUMBER	DESCRIPTION
		J13 - PIN01 - COL.1	J14 - PIN01 - RDV.1
		J13 - PIN02 - COL.2	J14 - PIN02 - RDV.2
		J13 - PIN03 - COL.3	J14 - PIN03 - RDV.3
		J13 - PIN04 - COL.4	J14 - PIN04 - RDV.4
		J13 - PIN05 - COL.5	J14 - PIN05 - RDV.5
		J13 - PIN06 - COL.6	J14 - PIN06 - RDV.6
		J13 - PIN07 - COL.7	J14 - PIN07 - RDV.7
		J13 - PIN08 - COL.8	J14 - PIN08 - RDV.8
		J13 - PIN09 - COL.9	J14 - PIN09 - RDV.9
		J13 - PIN10 - COL.10	J14 - PIN10 - RDV.10
		J13 - PIN11 - COL.11	J14 - PIN11 - RDV.11
		J13 - PIN12 - COL.12	J14 - PIN12 - RDV.12
		J13 - PIN13 - COL.13	J14 - PIN13 - RDV.13
		J13 - PIN14 - COL.14	J14 - PIN14 - RDV.14
		J13 - PIN15 - COL.15	J14 - PIN15 - RDV.15
		J13 - PIN16 - COL.16	J14 - PIN16 - RDV.16
		J13 - PIN17 - COL.17	J14 - PIN17 - N/C
		J13 - PIN18 - COL.18	J14 - PIN18 - N/C
		J13 - PIN19 - COL.19	J14 - PIN19 - N/C
		J13 - PIN20 - COL.20	J14 - PIN20 - N/C
		J13 - PIN21 - COL.21	J14 - PIN21 - N/C
		J13 - PIN22 - COL.22	J14 - PIN22 - N/C
		J13 - PIN23 - COL.23	J14 - PIN23 - N/C
		J13 - PIN24 - COL.24	J14 - PIN24 - N/C
		J13 - PIN25 - N/C	J14 - PIN25 - N/C
		J13 - PIN26 - N/C	J14 - PIN26 - N/C
		J13 - PIN31 - N/C	J14 - PIN31 - N/C
		J13 - PIN32 - N/C	J14 - PIN32 - N/C
		J13 - PIN33 - N/C	J14 - PIN33 - N/C
		J13 - PIN34 - N/C	J14 - PIN34 - N/C
		J13 - PIN35 - N/C	J14 - PIN35 - N/C
		J13 - PIN36 - N/C	J14 - PIN36 - N/C
		J13 - PIN37 - N/C	J14 - PIN37 - N/C
		J13 - PIN38 - N/C	J14 - PIN38 - N/C
		J13 - PIN39 - N/C	J14 - PIN39 - N/C
		J13 - PIN40 - N/C	J14 - PIN40 - N/C

NOTES:

1. WARP/TWIST OF BOARD < +0.020" & > -0.040"
2. COMPONENTS ON TOP SIDE ONLY
3. FINAL FINISH TO BE LEAD FREE HASL
4. ALL HOLES THROUGH PLATE
5. SOLDER MASK: TOP SIDE, BOTTOM SIDE & GREEN
6. SILK SCREEN: TOP SIDE & WHITE
7. SMALLEST TRACE: 0.005"
8. SMALLEST SPACE: 0.006"
9. ENVIRONMENTAL: ROHS COMPLIANT
10. LOW PROFILE BOARD W/O USB MINI: THICKNESS = 0.14" (3.57mm)

QTY	ITEM NO	PART NUMBER	DESCRIPTION
		J15 - PIN01 - N/C	J15 - PIN01 - N/C
		J15 - PIN02 - TX232	J15 - PIN02 - TX232
		J15 - PIN03 - RX232	J15 - PIN03 - RX232
		J15 - PIN04 - N/C	J15 - PIN04 - N/C
		J15 - PIN05 - GRD	J15 - PIN05 - GRD
		J15 - PIN06 - N/C	J15 - PIN06 - N/C
		J15 - PIN07 - GRD	J15 - PIN07 - GRD

DO NOT SCALE DRAWING!		UNLESS OTHERWISE SPECIFIED, DIMENSIONS ARE IN INCHES. REMOVE ALL BURRS AND BREAK SHARP EDGES.	
XX	= ±.060 UNO	FAC. TOL	X/X = ±1/16
XXX	= ±.020 UNO		
XXXX	= ±.010 UNO	ANGULAR TOL	= ±1°
XXXXX	= ±.008 UNO		
NOTICE OF PROPRIETARY RIGHTS			
THIS DOCUMENT, AND THE INFORMATION IT CONTAINS, IS PROPRIETARY TO TOUCH INTERNATIONAL. IT MUST NOT BE DUPLICATED, OR ITS CONTENTS USED OR DISCLOSED (IN WHOLE OR IN PART) WITHOUT WRITTEN PERMISSION FROM TOUCH INTERNATIONAL.			
SCALE:	NTS	DATE:	9/08
SHEET 1 OF 1		TITLE:	
SIZE:		A	
DWG. NO.:		54-B-PMC-07	
REV.:		C	
ACAD:		ACAD	



TOUCH INTERNATIONAL
2222 West Rundberg Ln #100
Austin, Texas 78758
512-832-8292