

54-B-PMC-14 Extreme Touch

Projected Capacitive 3 PSoC Controller

Touch International's 54-B-PMC-14 projected capacitive controller is one of several options the Extreme Touch product line has to offer. Designed to interface with computer systems through a wide variety of standard interfaces, the controller is compatible with USB, I2C and Serial communications. Combined with Touch International's proprietary firmware, the controller can easily be tuned to your custom design, as well as a range of different applications.

Features

Motion Detection Method	Capacitive sensing using a Sigma-Delta modulator.
X/Y Position Reporting	Absolute Position
Touch Force	No contact pressure required.
Calibration	No need for calibration.
Chip Set Solution	Available
Touch	Single Touch
Interface	HID Compliant
RoHS	Compliant
REACH	Compliant
Warranty	5 Years



Specifications

Controller Size	3.300" x 2.000" (83.82mm x 50.80mm)
Power Requirements	5 ~ 9V DC unregulated power, typical 60mA
Operating Temperature	-40 to 85°C
Storage Temperature	-40 to 85°C
Relative Humidity	35°C at 95% RH Non-Condensing
Interface	USB: 2.0, 1.1 Compliant (Standard) Optional: USB-UART RS-232 Serial Communication Protocol: No Parity, 8 Data Bits, 1 Stop Bit, 15200 Baud, No Flow Control I2C Communication
Communication Cables	A Plug/5-Pin Mini-B Plug (USB & USB-UART): TI# 1300264
Resolution	2048 x 2048
Report Rate	Approx. 20 - 40 Points/Sec
Mean Time between Failures	> 5,600,000 hrs.
Maximum Screen Size Supported	22"
Supported Operating Systems	Windows 2000, XP, Vista & 7, Linux Ubuntu, Mac OSX 10.X (Lepoard)

J22 PINOUT

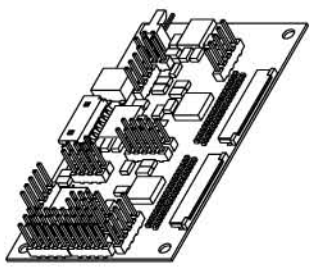
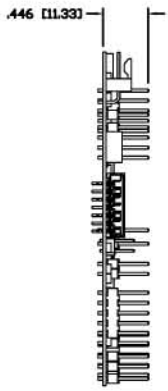
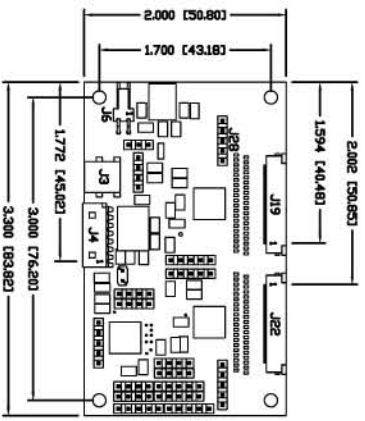
- J22 - PIN01 - COL1
- J22 - PIN02 - COL2
- J22 - PIN03 - COL3
- J22 - PIN04 - COL4
- J22 - PIN05 - COL5
- J22 - PIN06 - COL6
- J22 - PIN07 - COL7
- J22 - PIN08 - COL8
- J22 - PIN09 - COL9
- J22 - PIN10 - COL10
- J22 - PIN11 - COL11
- J22 - PIN12 - COL12
- J22 - PIN13 - COL13
- J22 - PIN14 - COL14
- J22 - PIN15 - COL15
- J22 - PIN16 - COL16
- J22 - PIN17 - COL17
- J22 - PIN18 - COL18
- J22 - PIN19 - COL19
- J22 - PIN20 - COL20
- J22 - PIN21 - COL21
- J22 - PIN22 - COL22
- J22 - PIN23 - COL23
- J22 - PIN24 - COL24
- J22 - PIN25 - COL25
- J22 - PIN26 - COL26
- J22 - PIN27 - COL27
- J22 - PIN28 - COL28
- J22 - PIN29 - COL29
- J22 - PIN30 - COL30
- J22 - PIN31 - COL31
- J22 - PIN32 - COL32
- J22 - PIN33 - COL33
- J22 - PIN34 - COL34
- J22 - PIN35 - COL35
- J22 - PIN36 - COL36
- J22 - PIN37 - COL37
- J22 - PIN38 - COL38
- J22 - PIN39 - COL39
- J22 - PIN40 - COL40

J3 PINOUT (USB)

- J3 - PIN01 - VBUS
- J3 - PIN02 - D-
- J3 - PIN03 - D+
- J3 - PIN04 - GRD
- J3 - PIN05 - N/C

J6 PINOUT

- J6 - PIN01 - VDC
- J6 - PIN02 - GRD



J19 PINOUT

- J19 - PIN01 - RDW1
- J19 - PIN02 - RDW2
- J19 - PIN03 - RDW
- J19 - PIN04 - RDW4
- J19 - PIN05 - RDW5
- J19 - PIN06 - RDW6
- J19 - PIN07 - RDW7
- J19 - PIN08 - RDW8
- J19 - PIN09 - RDW9
- J19 - PIN10 - RDW10
- J19 - PIN11 - RDW11
- J19 - PIN12 - RDW12
- J19 - PIN13 - RDW13
- J19 - PIN14 - RDW14
- J19 - PIN15 - RDW15
- J19 - PIN16 - RDW16
- J19 - PIN17 - RDW17
- J19 - PIN18 - RDW18
- J19 - PIN19 - RDW19
- J19 - PIN20 - RDW20
- J19 - PIN21 - RDW21
- J19 - PIN22 - RDW22
- J19 - PIN23 - RDW23
- J19 - PIN24 - RDW24
- J19 - PIN25 - RDW25
- J19 - PIN26 - RDW26
- J19 - PIN27 - RDW27
- J19 - PIN28 - RDW28
- J19 - PIN29 - RDW29
- J19 - PIN30 - RDW30
- J19 - PIN31 - RDW31
- J19 - PIN32 - RDW32
- J19 - PIN33 - RDW33
- J19 - PIN34 - RDW34
- J19 - PIN35 - RDW35
- J19 - PIN36 - RDW36
- J19 - PIN37 - RDW37
- J19 - PIN38 - RDW38
- J19 - PIN39 - RDW39
- J19 - PIN40 - RDW40

J4 PINOUT (RS232)

- J4 - PIN01 - GRD
- J4 - PIN02 - TX232
- J4 - PIN03 - RX232
- J4 - PIN04 - N/C
- J4 - PIN05 - GRD
- J4 - PIN06 - N/C
- J4 - PIN07 - GRD

- NOTES:
1. WARP/TWIST OF BOARD < +0.020" & > -0.040"
 2. COMPONENTS ON TOP SIDE ONLY
 3. FINAL FINISH TO BE LEAD FREE HASL
 4. ALL HOLES THROUGH PLATE
 5. SOLDER MASK: TOP SIDE, BOTTOM SIDE & GREEN
 6. SILK SCREEN: TOP SIDE & WHITE
 7. SMALLEST TRACE: 0.005"
 8. SMALLEST SPACE: 0.006"
 9. ENVIRONMENTAL: ROHS COMPLIANT
 10. LOW PROFILE BOARD W/O USB MINI: THICKNESS = 0.14" (3.57mm)

QTY	ITEM NO	PART NUMBER	DESCRIPTION
			DO NOT SCALE DRAWING! UNLESS OTHERWISE SPECIFIED, DIMENSIONS ARE IN INCHES. REMOVE ALL BURRS AND BREAK SHARP EDGES. DEC. TOLERANCE: XXX = ±.080 UNO FRACTIONAL TOL. X/X = ±1/16 XXXX = ±.015 UNO ANGLE TOL. = ±1° XXXXX = ±.008 UNO
			THIS DOCUMENT, AND THE INFORMATION IT CONTAINS, IS PROPRIETARY TO TOUCH INTERNATIONAL. IT MUST NOT BE DUPLICATED, OR ITS CONTENTS USED OR DISCLOSED (IN WHOLE OR IN PART) WITHOUT WRITTEN PERMISSION FROM TOUCH INTERNATIONAL.
			NOTICE OF PROPRIETARY RIGHTS
			SCALE: NTS
			SHEET 1 OF 1
			DRAWN DATE 1/08
			SIZE A
			DWG. NO. 54-B-PMC-14
			REV. A
			TITLE: TOUCH INTERNATIONAL 2222 West Rundberg Ln #100 Austin, Texas 78758 512-832-8292
			CONTROLLER, PCAP, 3 PSOC, 0.5 MM ZIF, SER/USB